

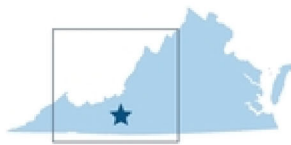
FAST FACTS 2023



Carilion Clinic is a nationally recognized, tax-exempt health system advancing the health of our communities and the nation through comprehensive patient care, education and research. With a network of seven hospitals, more than 250 physician practices and a range of health and wellness services, Carilion cares for nearly 1 million Virginians and West Virginians. Partnerships with premier institutions like Virginia Tech and Radford University help us train tomorrow's medical providers, discover new treatments and techniques and enhance patient care.

Our Service Area

Carilion Clinic serves an approximately 20-county region in central and southwestern Virginia and southern West Virginia.



Our Hospitals

- Carilion **Roanoke Memorial** Hospital (CRMH)
- Carilion **New River Valley** Medical Center (CNRV)
- Carilion **Children's** Hospital
- Carilion **Franklin Memorial** Hospital (CFMH)
- Carilion **Giles Community** Hospital (CGCH)
- Carilion **Roanoke Community** Hospital (CRCH)
- Carilion **Rockbridge Community** Hospital (CRBH)
- Carilion **Tazewell Community** Hospital (CTCH)

By the Numbers

- 1,041** licensed beds
- 3** EMS helicopters
- 60** neonatal ICU beds
- 6** first-response vehicles
- 14,569** employees
- 42** advanced life support ambulances
- 6,097** square-mile service area

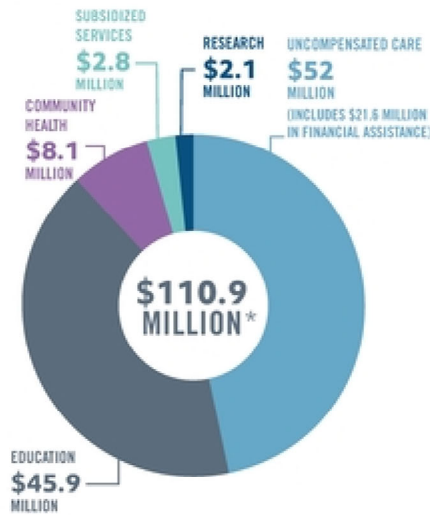
Our Mission

Improve the health of the communities we serve.

Our Vision

We are committed to a common purpose of better patient care, better community health and lower cost.

Community Benefit



*Fiscal year 2022, per Virginia Hospital and Healthcare Association guidelines

Our Clinicians

- 846*** physicians
- 85** specialties
- 2,578** direct care nurses
- 264** practice sites
- 511** advanced clinical practitioners

*Approximately 400 physicians in private practice on hospitals' medical staff

Caring for Our Community

- 806,202** outpatient visits
- 673,456** telehealth visits
- 149,561** VelocityCare visits (urgent care)
- 43,075** hospital admissions
- 10,024** home care patients
- 308,916** prescriptions filled
- 162,010** Emergency Department visits
- 12,791** wellness members
- 3,865** babies delivered
- 53,218** surgeries
- 3,853** emergency patient transports

Our Values



COLLABORATION

COMMITMENT

COMPASSION

COURAGE

CURIOSITY